

# Motor HONDA GP-160

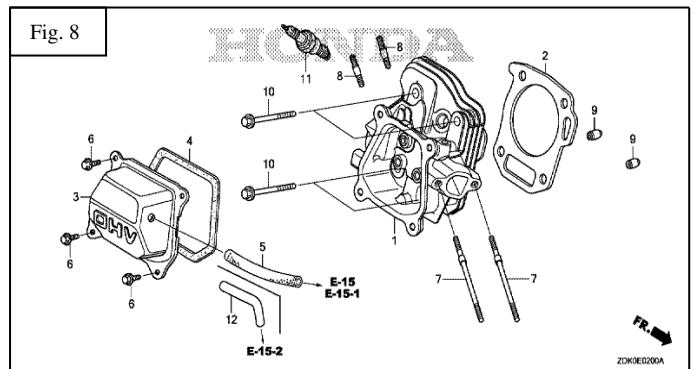
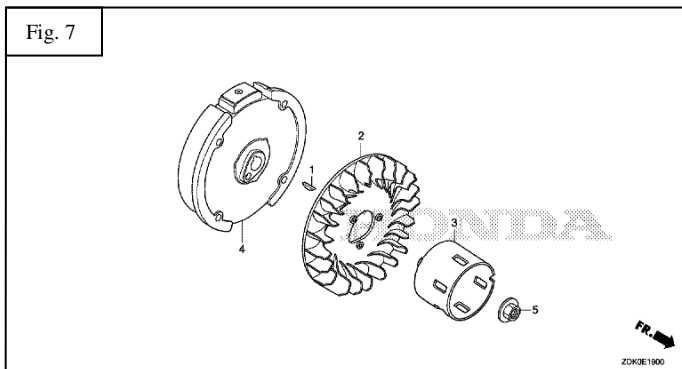
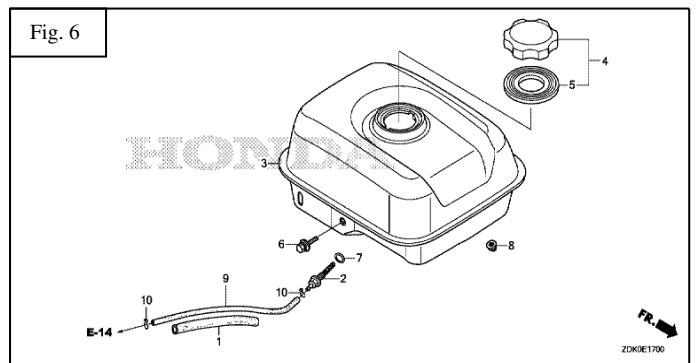
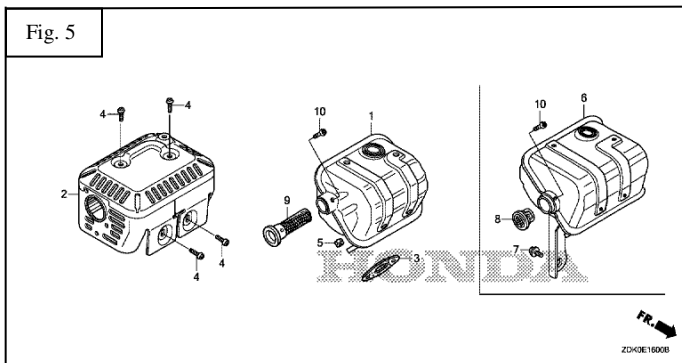
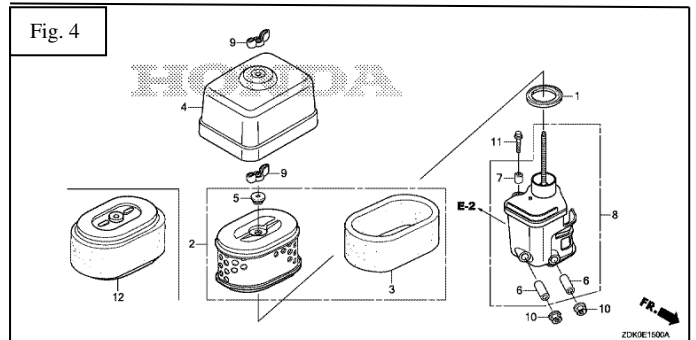
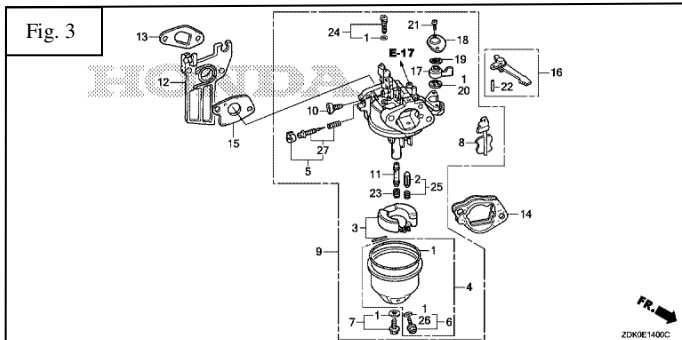
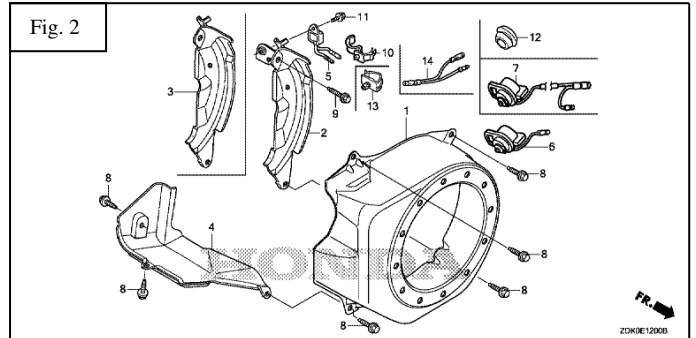
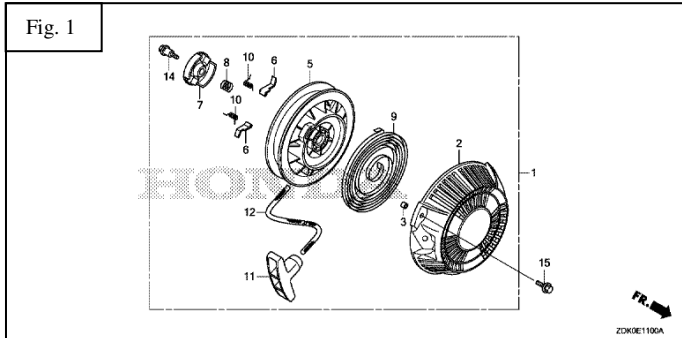
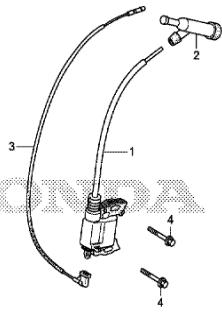
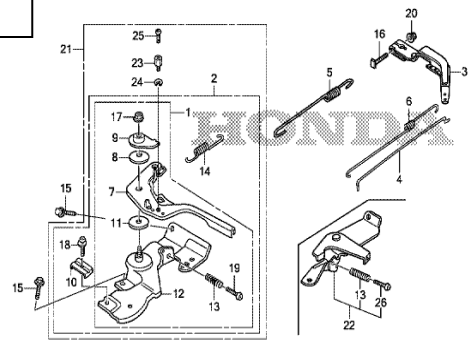


Fig. 9



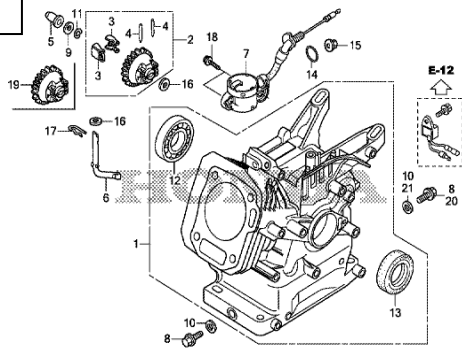
FR. →  
ZDK0E2000

Fig. 10



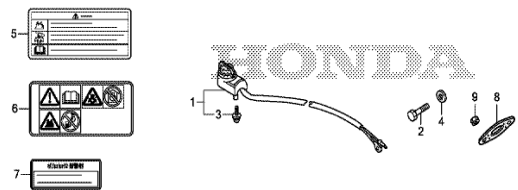
FR. →  
ZDK0E2200A

Fig. 11



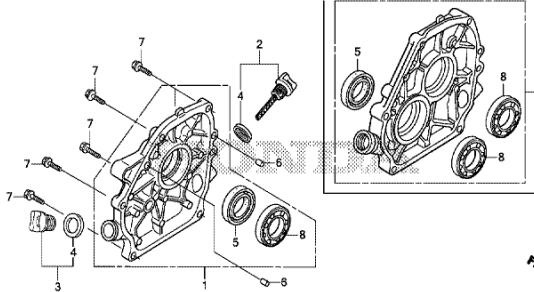
FR. →  
ZDK0E3000

Fig. 12



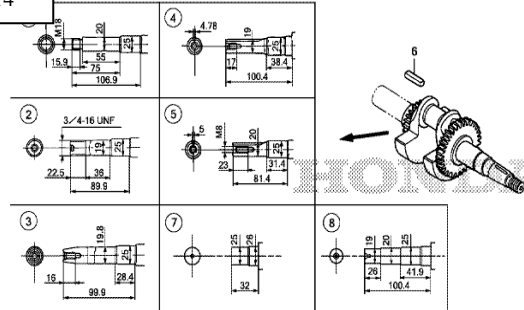
ZDK0E4000B

Fig. 13



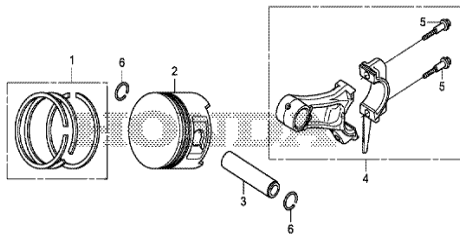
FR. →  
ZDK0E6000A

Fig. 14



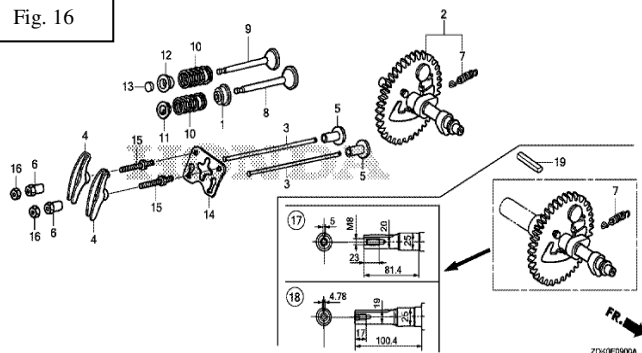
FR. →  
ZDK0E700B

Fig. 15



FR. →  
ZDK0E800A

Fig. 16



FR. →  
ZDK0E9000A



<b><u>CJTO. CULATA (Fig. 8)</u></b>									
<b><u>BOBINA ALTA (Fig. 9)</u></b>									
<b><u>CONTROL MANDOS (Fig. 10)</u></b>									
<b><u>CILINDRO (Fig. 11)</u></b>									
<b><u>(Fig. 12)</u></b>									
<b><u>TAPA CARTER (Fig. 13)</u></b>									
<b><u>CIGÜEÑAL (Fig. 14)</u></b>									
<b><u>PISTON (Fig. 15)</u></b>									
<b><u>ARBOL DE LEVAS (Fig. 16)</u></b>									

NOTA: En ésta lista están los recambios más habituales. Si se necesita algún otro “consultar”.