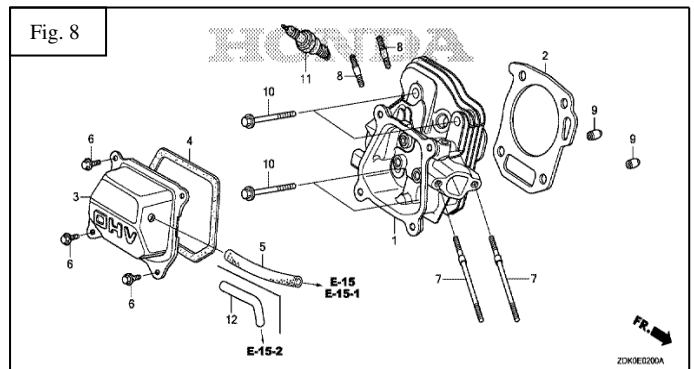
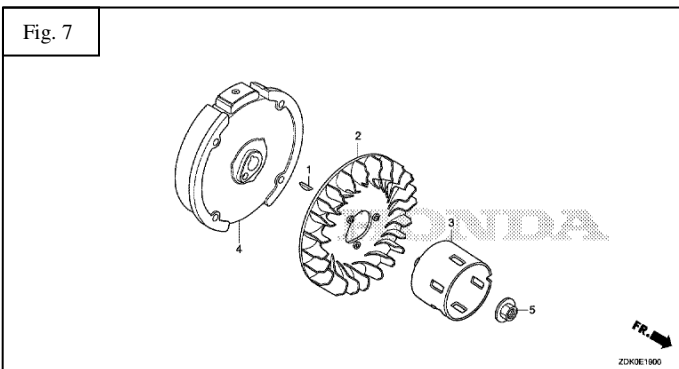
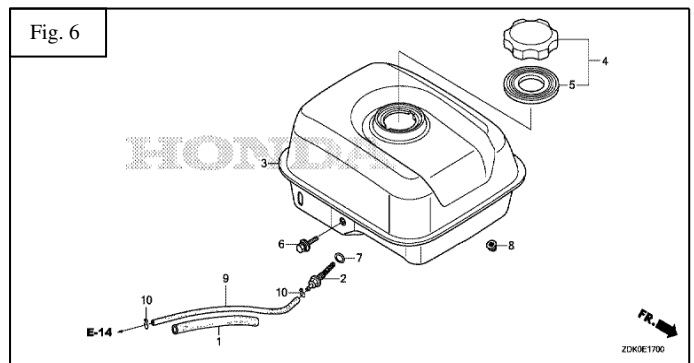
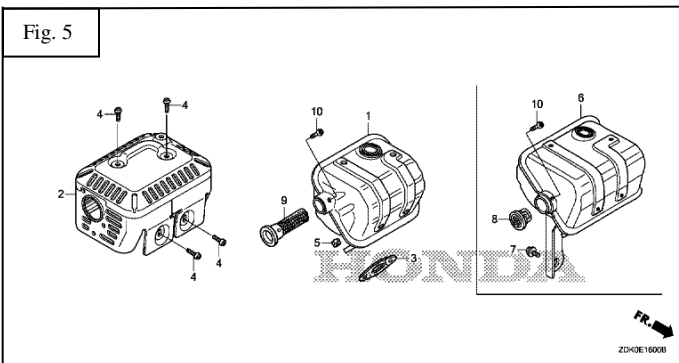
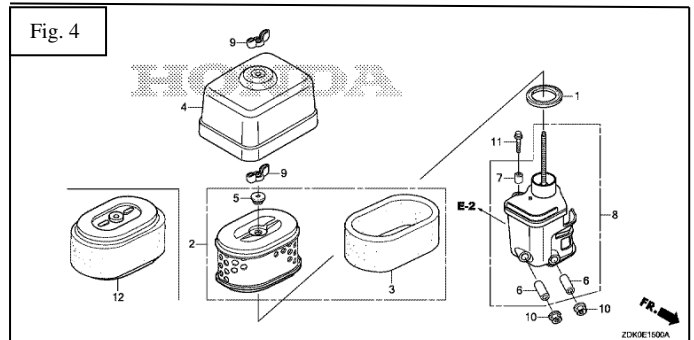
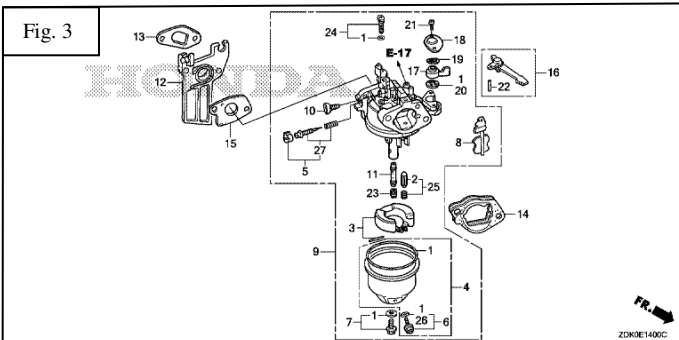
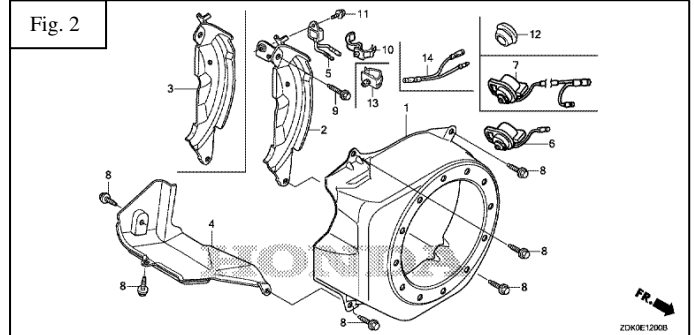
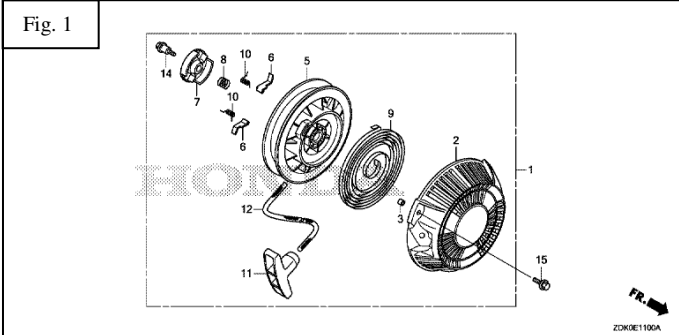
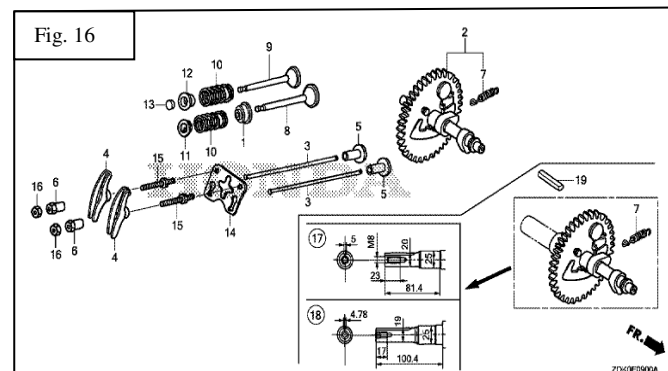
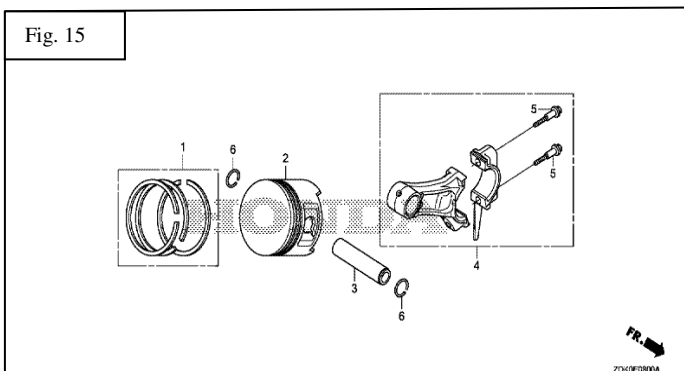
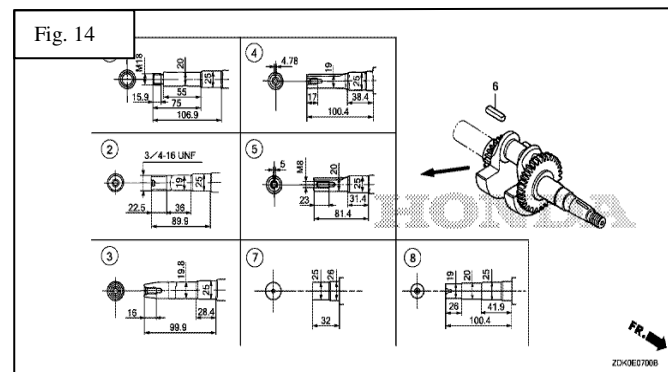
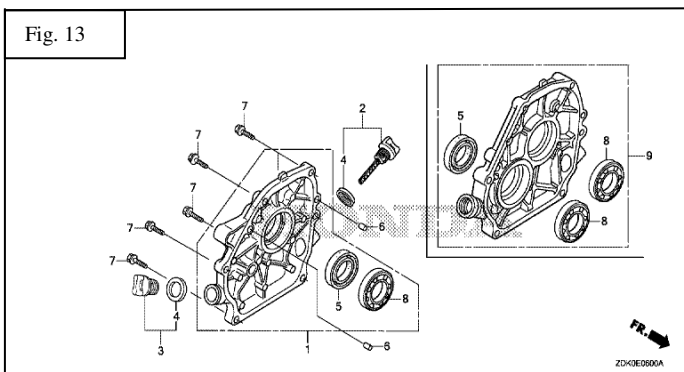
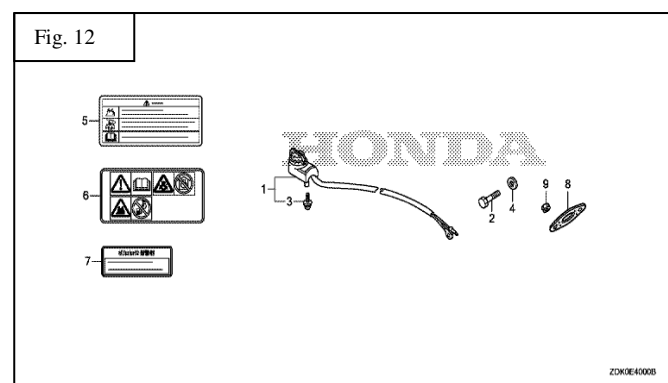
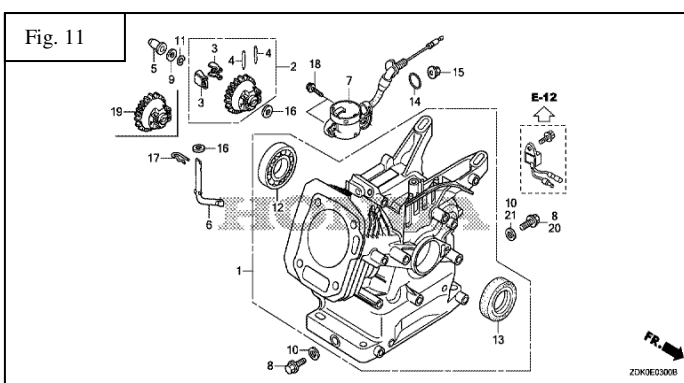
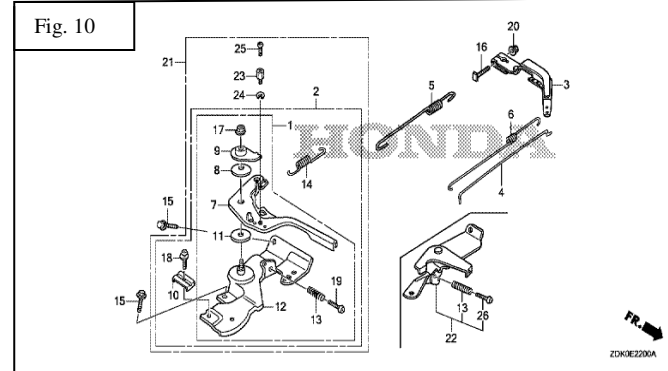
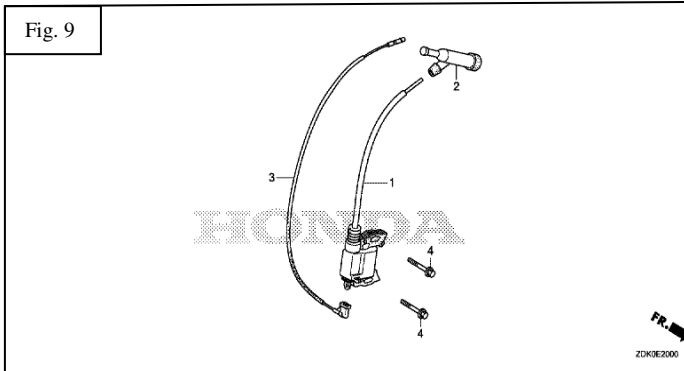


Motor HONDA GP-160





<u>CJTO. CULATA (Fig. 8)</u>									
<u>BOBINA ALTA (Fig. 9)</u>									
<u>CONTROL MANDOS (Fig. 10)</u>									
<u>CILINDRO (Fig. 11)</u>									
<u>(Fig. 12)</u>									
<u>TAPA CARTER (Fig. 13)</u>									
<u>CIGÜEÑAL (Fig. 14)</u>									
<u>PISTON (Fig. 15)</u>									
<u>ARBOL DE LEVAS (Fig. 16)</u>									

NOTA: En ésta lista están los recambios más habituales. Si se necesita algún otro “consultar”.