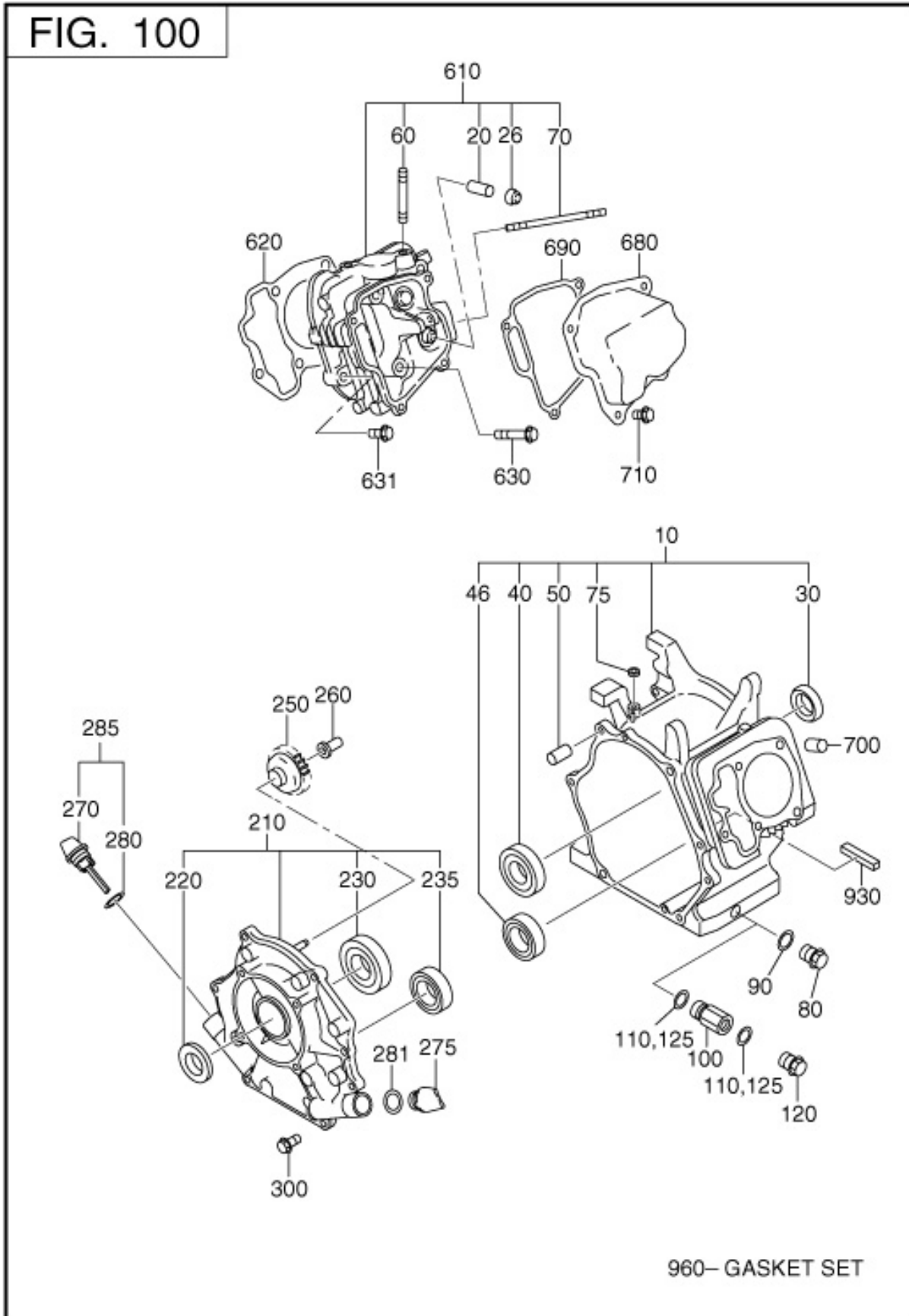


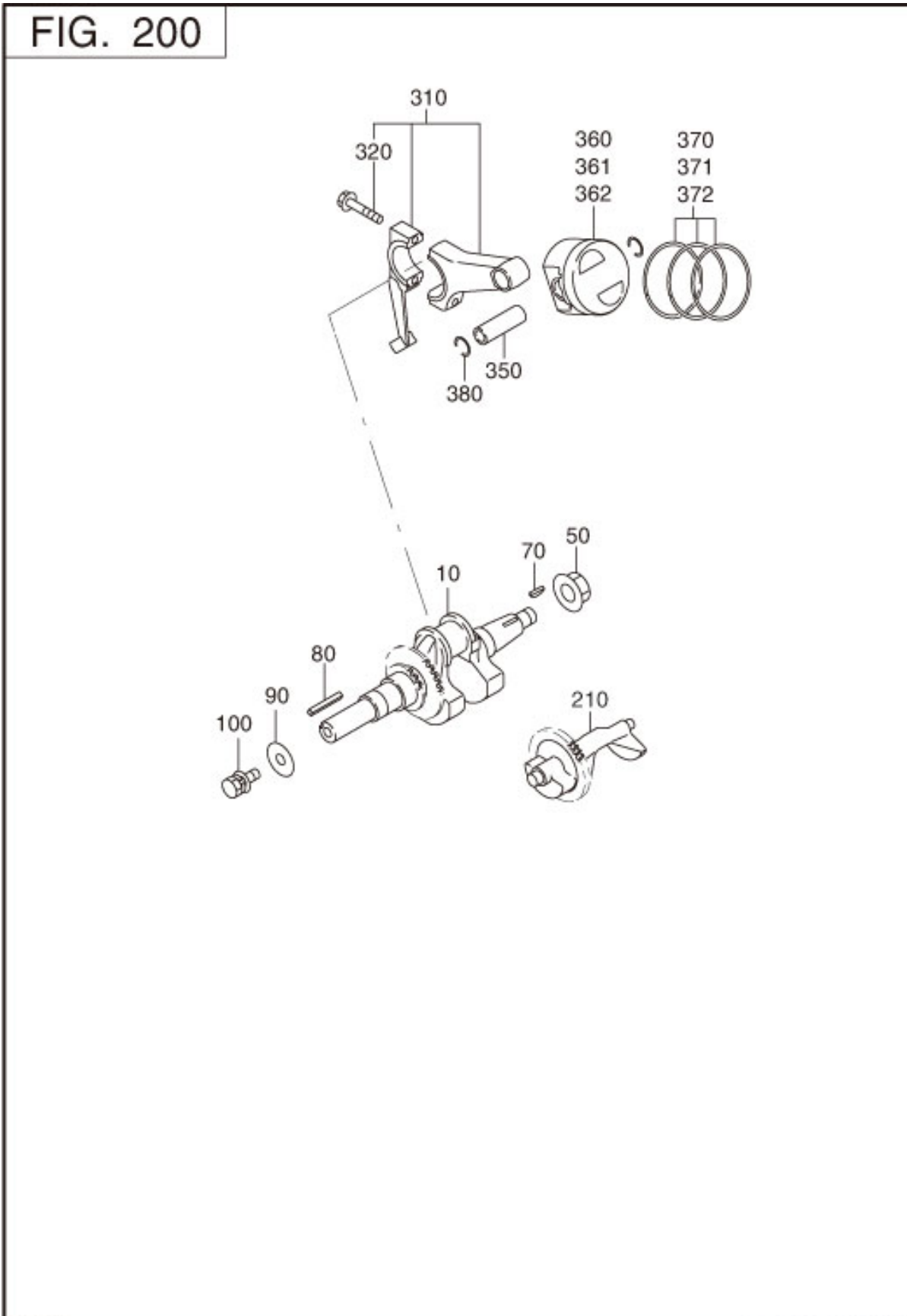
1 CRANK CASE



REF.	PART NUMBER	PART NAME	CODE NO.	QTY	REMARKS	INTERCHANGE
10	279-10102-91	CRANK CASE CP	6951-	1	W/OIL SENSOR	279-10106-01
	279-10102-81	CRANK CASE CP	-6950	1	W/OIL SENSOR	279-10102-91
20	237-14202-03	VALVE GUIDE	-	2	5.5DX9.5DX27L	
26	277-16010-01	STEM SEAL	-	1	5.5DX9.5DX15DX7.8 B	
30	044-03001-60	OIL SEAL	-	1	30DX45DX7B	
40	060-03003-41	BALL BEARING	-	1	30DX62DX16B	
50	277-15011-03	PIPE KNOCK	-	2	10.3DX8.5DX14L	
60	010-50802-90	STUD	-	2	M8X1.25X30L	
70	010-50604-10	STUD	-	2	M6X1.0X107L	
75	044-00600-20	OIL SEAL 6X10X2.5	-	1		
80	040-11400-30	PLUG	-	2	M14X1.5X20DX12L	
90	021-11400-20	GASKET	-	2	14.1DX19DX2.3T	
210	279-11002-11	MAIN BEARING COVER C	-	1	FLANGE 4-5/16- 24UNF	279-11002-21
220	044-03001-60	OIL SEAL	-	1	30DX45DX7B	
230	060-03003-70	BALL BEARING	-	1	30DX62DX16B	
250	277-45004-J1	GOVERNOR GEAR CP	-	1	53DX29.1T N=33	277-45004-K1
260	277-41901-03	GOVERNOR SLEEVE	-	1		277-41902-01
270	279-63601-13	OIL GAUGE	-	2	M22X1.5 L=67.5+18	279-63601-23
280	021-32000-50	GASKET	-	1	20DX27DX1.5T RUBBER	
300	001-04083-50	FLANGE BOLT	-	7	M8X1.25X16DX35L	
610	279-13002-31	CYLINDER HEAD CP	-	1		
620	279-15001-33	GASKET (HEAD)	-	1	T=0.2	
630	011-00802-40	FLANGE BOLT	-	4	M8X1.25X16DX68L	
631	011-00803-10	FLANGE BOLT	-	1	M8X1.25X16DX33L	
680	277-15503-01	ROCKER COVER CP	-	1		
690	277-16001-13	GASKET(ROCKER COVER)	-	1	T=0.5	
700	277-15011-03	PIPE KNOCK	-	2	10.3DX8.5DX14L	
710	011-00600-20	FLANGE BOLT	-	4	M6X1.0X14DX12L	
930	279-69501-13	SPONGE 1	7061-	1		

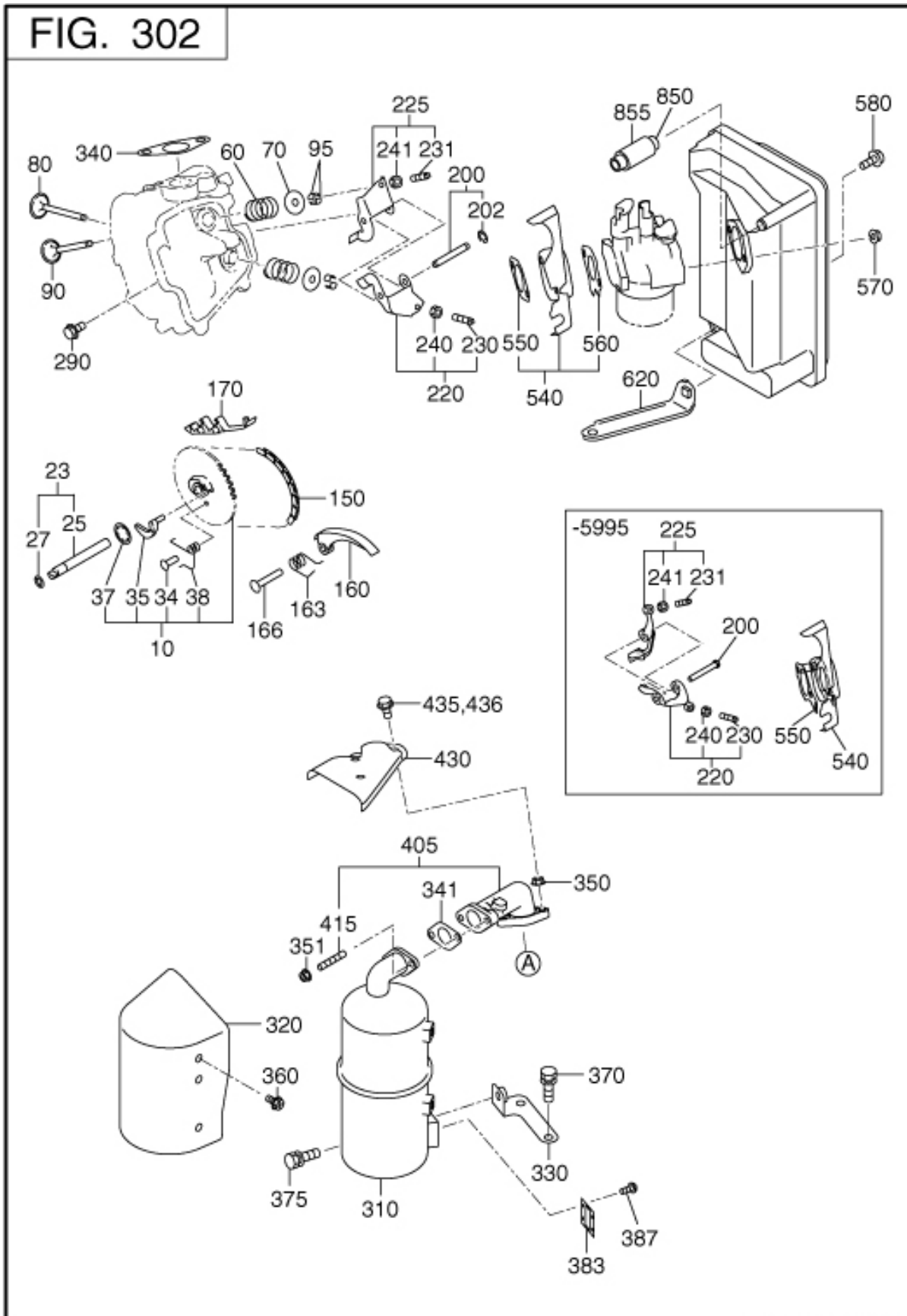
REF.	PART NUMBER	PART NAME	CODE NO.	QTY	REMARKS	INTERCHANGE
	279-69501-03	SPONGE 1	-7060	1		279-69501-13
960	279-99001-27	GASKET SET	-	1		279-99001-37

2 CRANKSHAFT,PISTON



REF.	PART NUMBER	PART NAME	CODE NO.	QTY	REMARKS	INTERCHANGE
10	279-21201-31	CRANKSHAFT CP	-	1	L=342 DH 22.1DX1/5.3	279-21201-41
50	018-01800-10	FLANGE NUT	-	1	M18X1.5X31DX14H	
70	032-30300-10	WOODRUFF KEY	-	1	3BX6HX16D	
310	279-22501-20	CONNECTING ROD AY	-	1	104.5CDX26B 34.5D-18	279-22501-30
320	279-23001-03	CONNECTING ROD BOLT	-	2	M7X1.0X13.8DX40L	
350	279-23301-13	PISTON PIN	-	1	18DX13DX53L	
360	279-23401-H3	PISTON	-	1	STD (75DX43H)	
361	279-23403-H3	PISTON	-	1	0.25 O.S.(75DX43H)	
362	279-23404-H3	PISTON	-	1	0.50 O.S.(75DX43H)	
370	279-23511-17	PISTON RING SET	-	1	STD (75D) OIL EXPAND	
371	279-23512-17	PISTON RING SET	-	1	0.25 O.S. OIL EXPAND	
372	279-23513-17	PISTON RING SET	-	1	0.50 O.S. OIL EXPAND	
380	056-51800-10	CLIP	-	2	18.9DX1.6D	

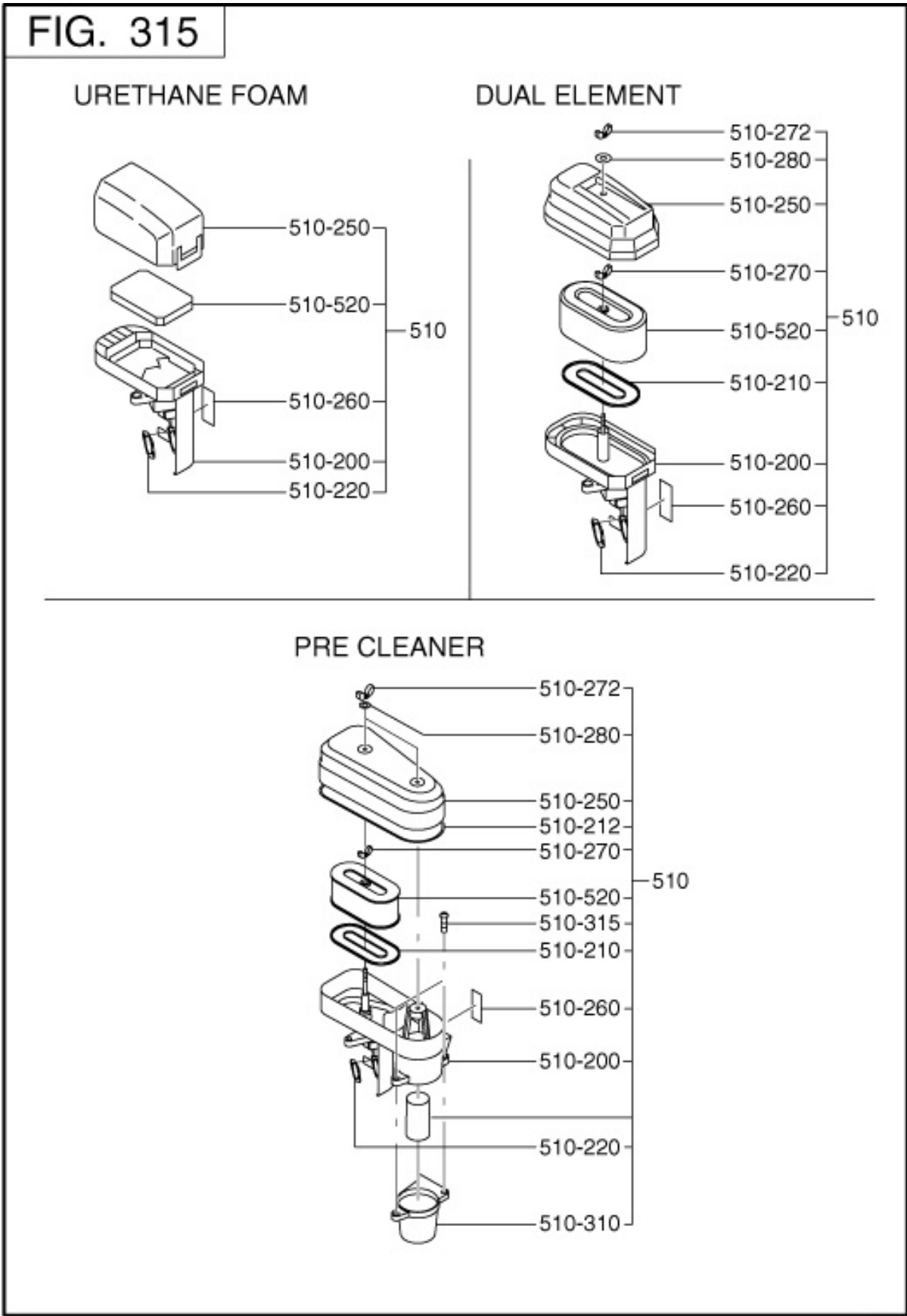
3 INTAKE,EXHAUST



REF.	PART NUMBER	PART NAME	CODE NO.	QTY	REMARKS	INTERCHANGE
10	279-31601-01	CAM SHAFT CP	-	1	93DX2.9B N=44	279-31601-11
25	277-35101-03	PIN(CAM SHAFT)	-	1	9DX78.5L	277-35101-01
27	024-00600-10	O RING	-	1	5.8DX9.6D	024-00600-30
34	277-38601-03	PIN(SPRING)	-	1	4DX8DX9L	
35	279-36401-03	RELEASE LEVER	-	1		
37	277-36501-03	CLIP	-	1	13.8DX20.3DX0.4T	
38	277-38701-03	RETURN SPRING	-	1	5.3DX0.6DX5.5L N=5.8	
60	279-33601-03	VALVE SPRING	-	2	19.2DX2.3DX27.4L	
70	269-33701-03	SPRING RETAINER	-	2		
80	279-33401-H3	INTAKE VALVE	-	1	28.5DX5.5DX67.8L	
90	279-33501-H3	EXHAUST VALVE	-	1	26.5DX5.5DX67.8L	
95	132-10KA0-31	COLLET-VALVE	-	4		
150	279-35601-11	TIMING CHAIN CP	-	1	100 LINK	279-35602-H1
160	277-36911-03	TENTIONER	-	1		
163	277-37101-03	SPRING(TENTIONER)	-	1	10DX1.8DX14L N=4.5	
166	277-36902-03	PIN(TENTIONER)	-	1	6DX13DX34L	
170	277-36913-13	CHAIN GUIDE	-	1		
200	277-35002-01	PIN(ROCKER) CP	-	1	6DX46L	277-35004-01
202	003-13050-00	CLIP	-	1	5DX11DX0.6T	
220	277-36201-00	ROCKER ARM(IN) AY	-	1		
225	277-36202-00	ROCKER ARM(EX) AY	-	1		
230	014-90500-20	ADJUST SCREW	-	1	M5X0.5X23L	
231	014-90500-20	ADJUST SCREW	-	1	M5X0.5X23L	
240	017-00500-30	NUT	-	1	M5X0.5X4.1H	
241	017-00500-30	NUT	-	1	M5X0.5X4.1H	
290	011-00600-20	FLANGE BOLT	-	1	M6X1.0X14DX12L	
310	279-30502-01	MUFFLER CP	-	1		
320	279-34701-01	MUFFLER COVER	-	1		
330	279-39101-11	MUFFLER BRACKET CP	-	1		
340	277-35201-13	GASKET(MUFFLER)	-	1	T=0.2 26D 9DX58P	

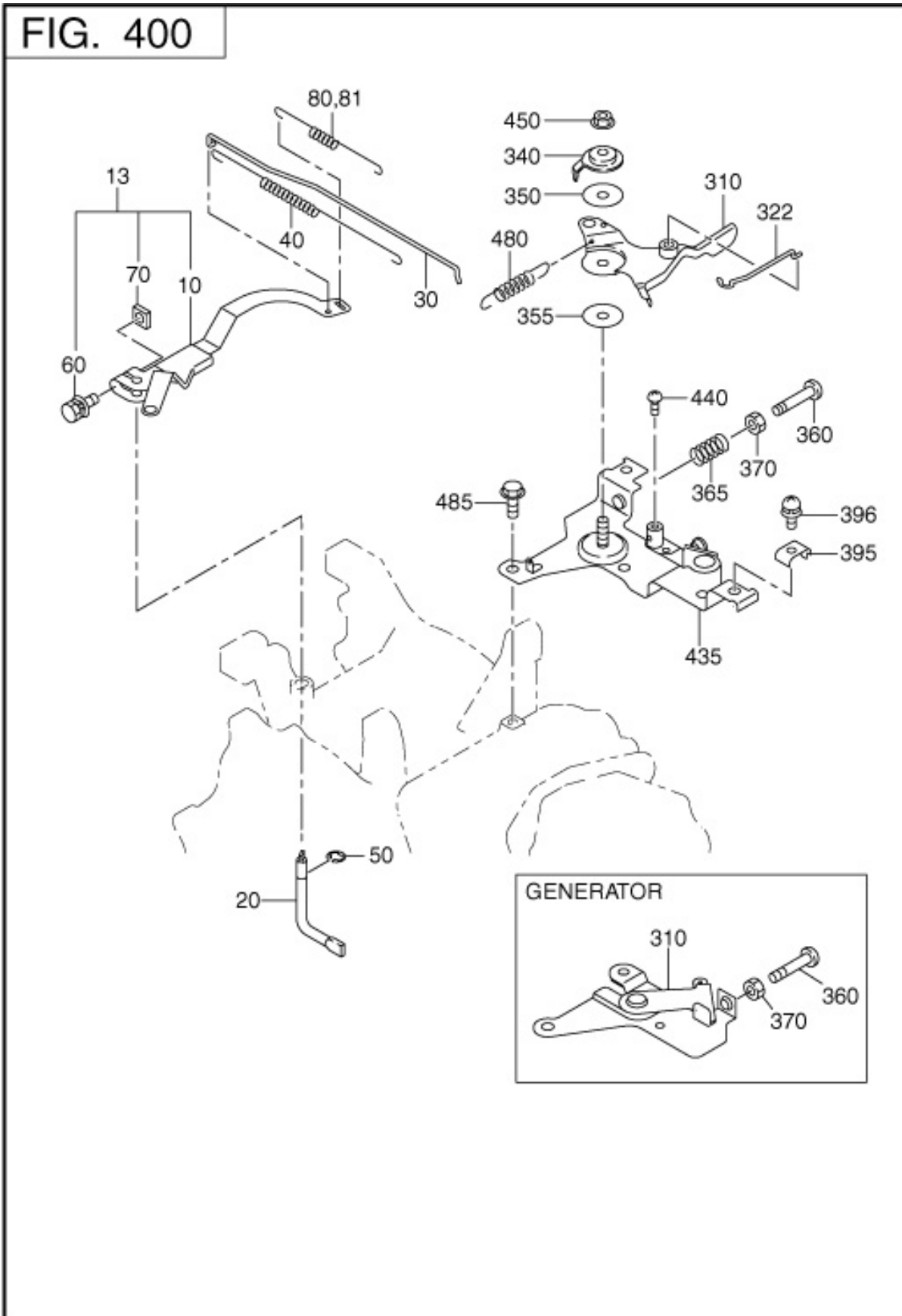
REF.	PART NUMBER	PART NAME	CODE NO.	QTY	REMARKS	INTERCHANGE
350	018-00800-50	FLANGE NUT	-	2	M8X1.25X17DX21H	
405	277-34001-01	EXHAUST PIPE CP	-	1		
415	010-50802-90	STUD	-	2	M8X1.25X30L	
540	279-32902-J1	INSULATOR CP	-	1	W/GASKET	
560	279-35902-J3	GASKET1(INSULATOR)	-	1	T=0.5	
570	002-38060-00	FLANGE NUT	-	2	M6X1.0X13DX6H	
580	001-04062-00	FLANGE BOLT	-	1	M6X1.0X13DX20L	
850	279-32760-08	RUBBER PIPE	-	1	8DX11DX115L	

3 INTAKE EXHAUST



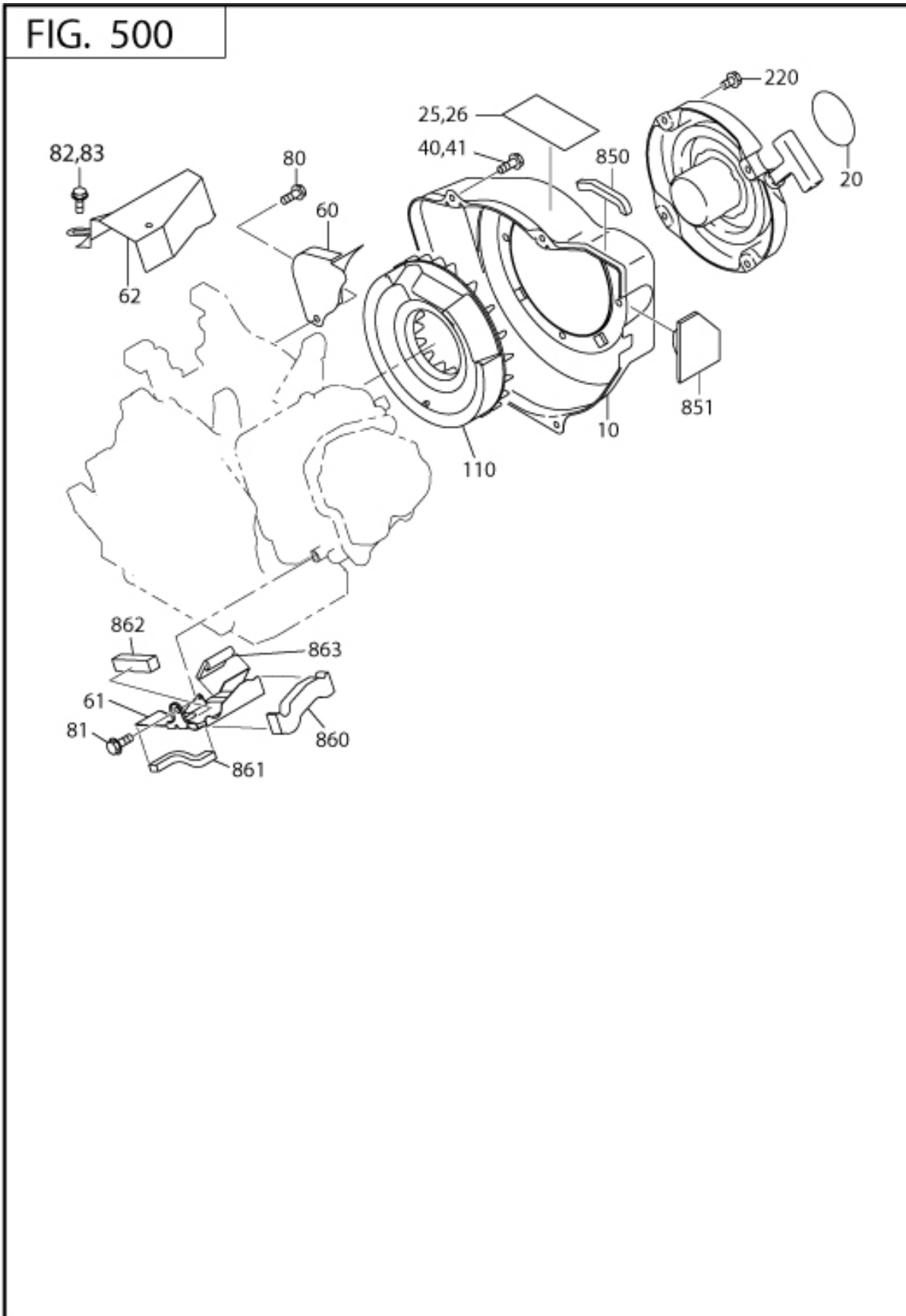
REF.	PART NUMBER	PART NAME	CODE NO.	QTY	REMARKS	INTERCHANGE
510	279-32611-20	AIR CLEANER AY	-	1	URETHANE FOAM	279-32611-30
-200	279-32630-28	CASE	-	1		
-220	279-32650-08	GASKET	-	1		279-32650-18
-250	279-32640-08	COVER	-	1		
-260	279-32730-08	LABEL	-	1		
-520	279-32603-08	ELEMENT	-	1	URETHANE FOAM	

4 GOVERNOR OPERATION



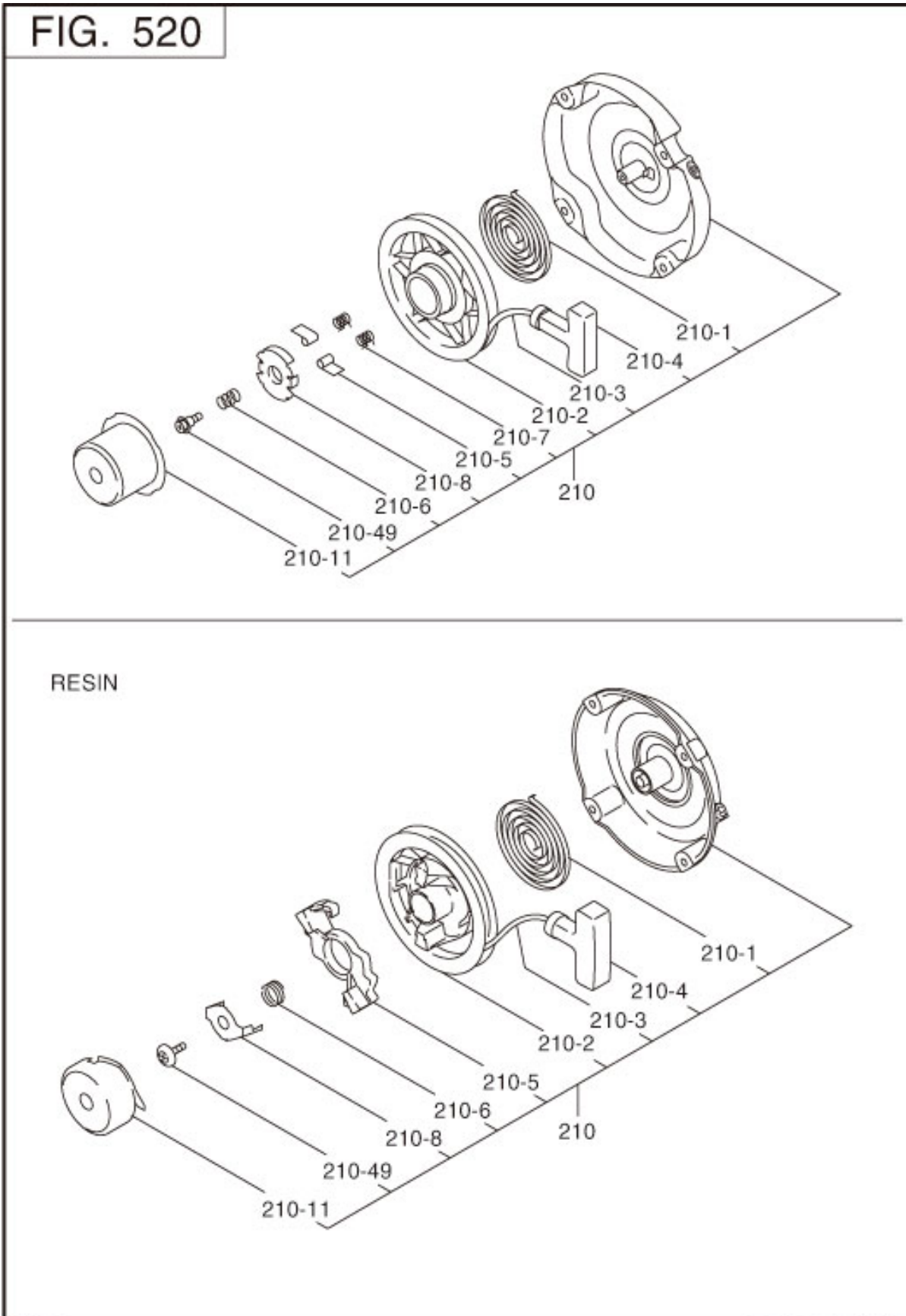
REF.	PART NUMBER	PART NAME	CODE NO.	QTY	REMARKS	INTERCHANGE
10	279-42301-53	GOVERNOR LEVER	6998-	1		279-42301-63
	279-42301-43	GOVERNOR LEVER	-6997	1		279-42301-63
20	277-42201-33	GOVERNOR SHAFT	-	1		
30	279-42701-11	GOVERNOR ROD CP	-	1		279-42701-23
40	277-42801-23	ROD SPRING	-	1	7DX0.5DX182L N=16	
50	003-13050-00	CLIP	-	1	5DX11DX0.6T	
60	013-00602-40	BOLT AND WASHER AY	-	1	M6X1.0X25L W/TWO W	
70	018-60600-20	NUT	-	1	M6X1.0X4.9H SQUARE	
80	279-42505-33	GOVERNOR SPRING	-	1	7.5DX0.7DX115L N=25	279-42505-43
310	277-43303-03	SPEED CONTROL LEVER	-	1		
340	277-43502-03	STOP PLATE	-	1		
350	277-44501-03	WASHER	-	1		
355	021-70600-70	FRICTION WASHER	-	1	6.5DX24DX0.8T NYLON	
360	004-31062-50	SCREW,PANHEAD	-	1	M6X1.0X25L	
365	237-45004-23	SPRING (ADJUST)	-	1	6.9DX0.9DX20L N=7	
435	277-46002-02	SPEED CONT.BRKT UN	-	1		
450	002-35060-00	SELF LOCK NUT	-	1	M6X1.0X6.8H	
485	011-00600-20	FLANGE BOLT	-	2	M6X1.0X14DX12L	

5 COOLING,STARTING



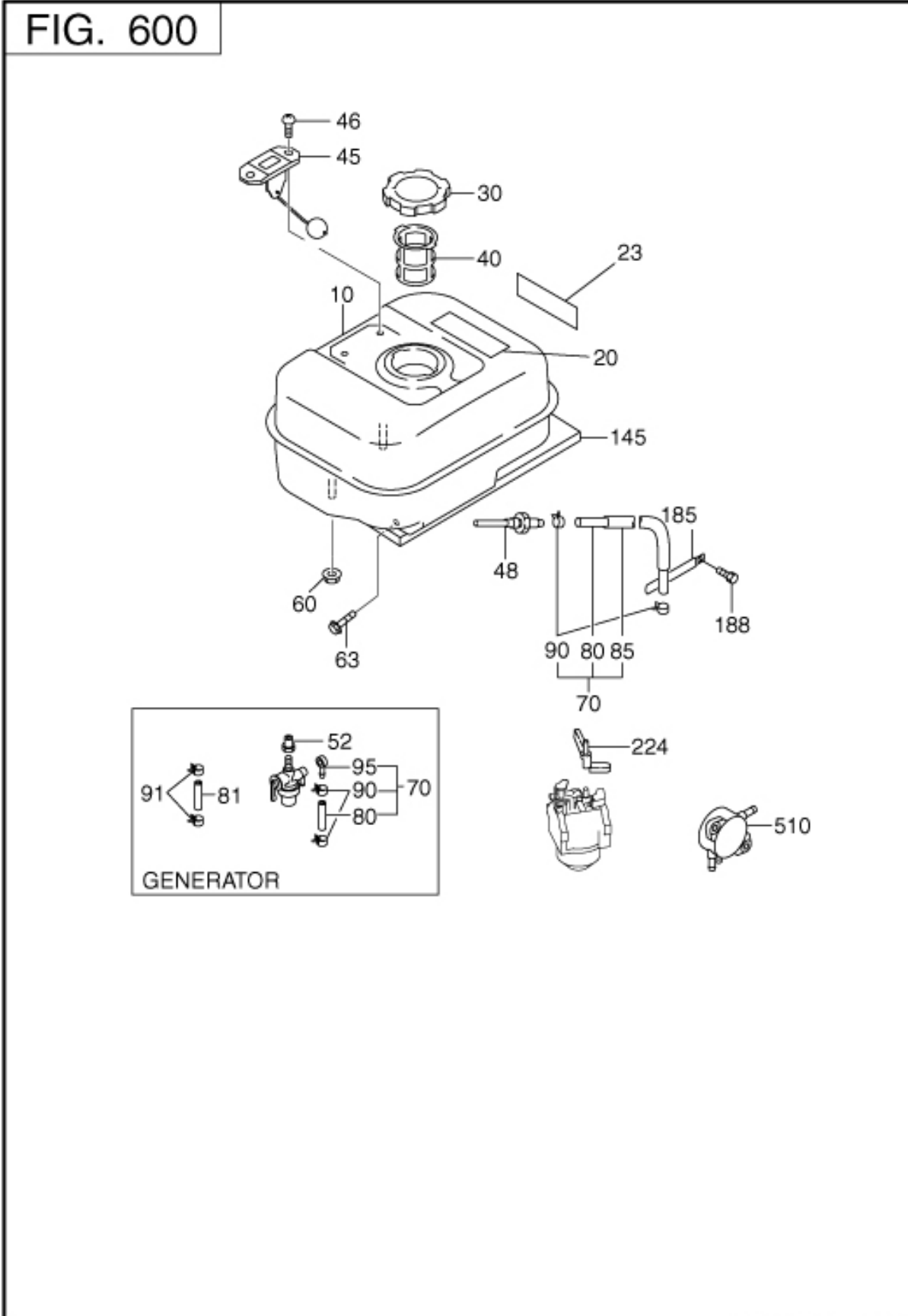
REF.	PART NUMBER	PART NAME	CODE NO.	QTY	REMARKS	INTERCHANGE
10	279-51201-11	BLOWER HOUSING CP	-	1	ROBIN YELLOW	
20	073-20054-70	LABEL(TRADE MARK)	-	1	60D	
40	011-00600-30	FLANGE BOLT	-	4	M6X1.0X14DX14L	
60	279-52711-11	BAFFLE 1(CASE) CP	-	1		
61	279-52702-13	BAFFLE 2(HEAD)	-	1		
62	279-55001-03	COVER,EXHAUST PIPE	-	1		
81	011-00600-20	FLANGE BOLT	-	1	M6X1.0X14DX12L	
220	013-00602-80	BOLT AND WASHER AY	-	4	M6X1.0X14L W/SW	013-00602-81

5 COOLING STARTING



REF.	PART NUMBER	PART NAME	CODE NO.	QTY	REMARKS	INTERCHANGE
210	279-50301-00	RECOIL STARTER AY	-	1	170PD RESIN	279-50301-10
- 1	226-50716-08	SPIRAL SPRING	-	1		
- 2	277-50121-08	REEL	-	1		
- 3	279-50110-08	STARTER ROPE	-	1		
- 4	226-50701-08	STARTER KNOB	-	1		226-50701-18
- 5	281-50325-08	RATCHET	-	1		
- 6	281-50330-08	FRICTION SPRING	-	1		
- 8	281-50340-08	FRICTION PLATE	-	1		
- 11	279-50148-08	STARTER PULLEY	-	1		
- 49	281-50351-08	CENTER SCREW	-	1		

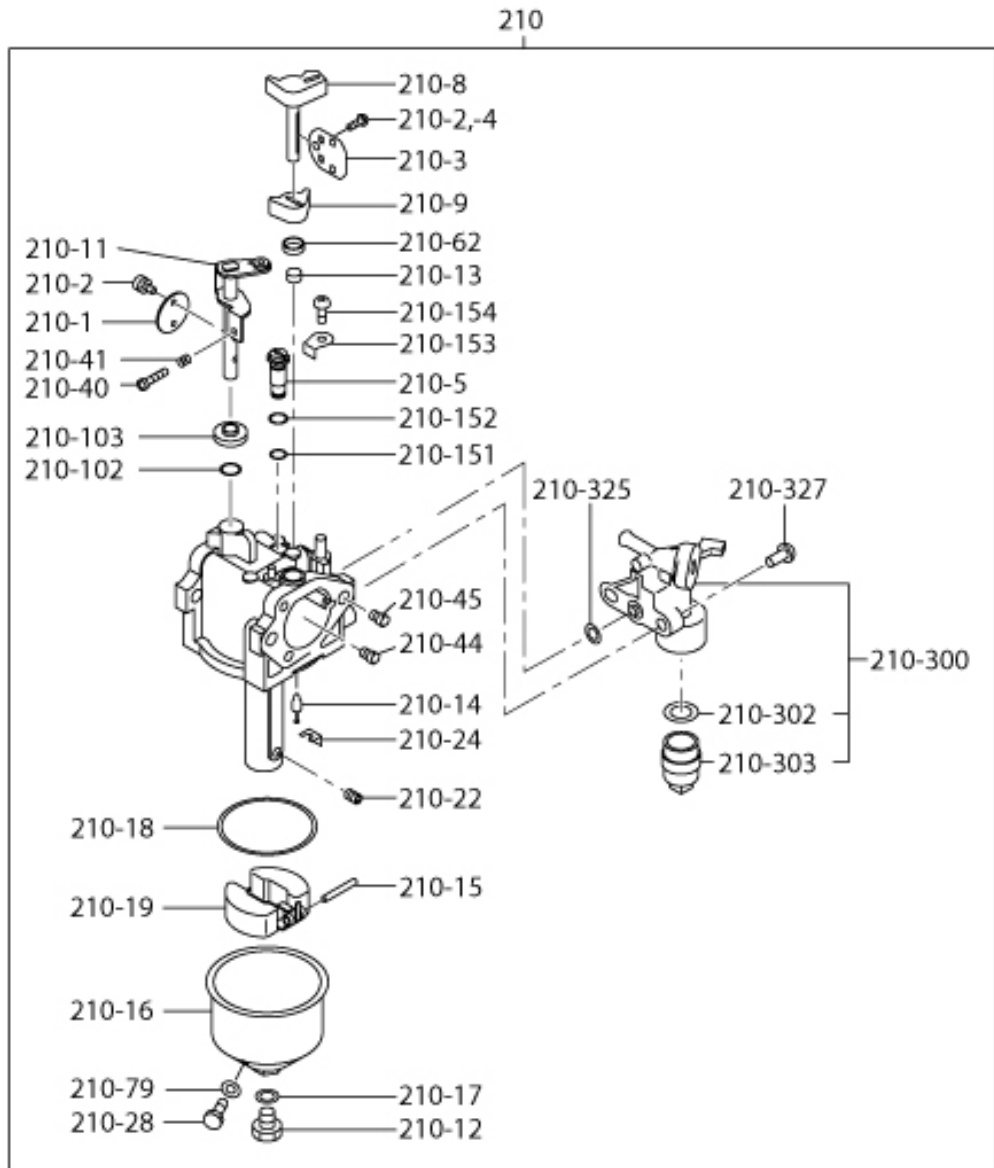
6 FUEL LUBRICANT



REF.	PART NUMBER	PART NAME	CODE NO.	QTY	REMARKS	INTERCHANGE
10	279-60101-21	FUEL TANK CP	-	1	6.1L ROBIN YELLOW	
20	073-20051-81	LABEL(WARNING)	-	1	42X104 ENGLISH	
23	279-95111-03	LABEL(MODEL)	-	1	32X125	279-95112-03
30	043-04400-50	FUEL TANK CAP CP	-	1	43DX68DX14H BLACK	
40	X64-13600-10	FUEL FILTER	-	1		
48	050-51200-20	UNION	-	1	M12X4DX78L W/FILTER	X50-51200-20
60	002-38080-00	FLANGE NUT	-	2	M8X1.25X17DX7.5H	
63	011-00802-50	FLANGE BOLT	-	2	M8X1.25X16DX25L	
70	279-62602-01	FUEL PIPE CP	-	1	6DX11.6DX195L	
80	X85-10615-80	RUBBER PIPE	-	1	6DX11.6DX195L	
85	279-64502-H1	GLASS TUBE	-	1		
90	056-11100-50	HOSE CLAMP	6972-	2		X56-11100-60
	X56-11100-20	HOSE CLAMP	-6971	2	10.5DX8BX0.7T	056-11100-20
224	277-43801-01	CHOKE LEVER CP	-	1		

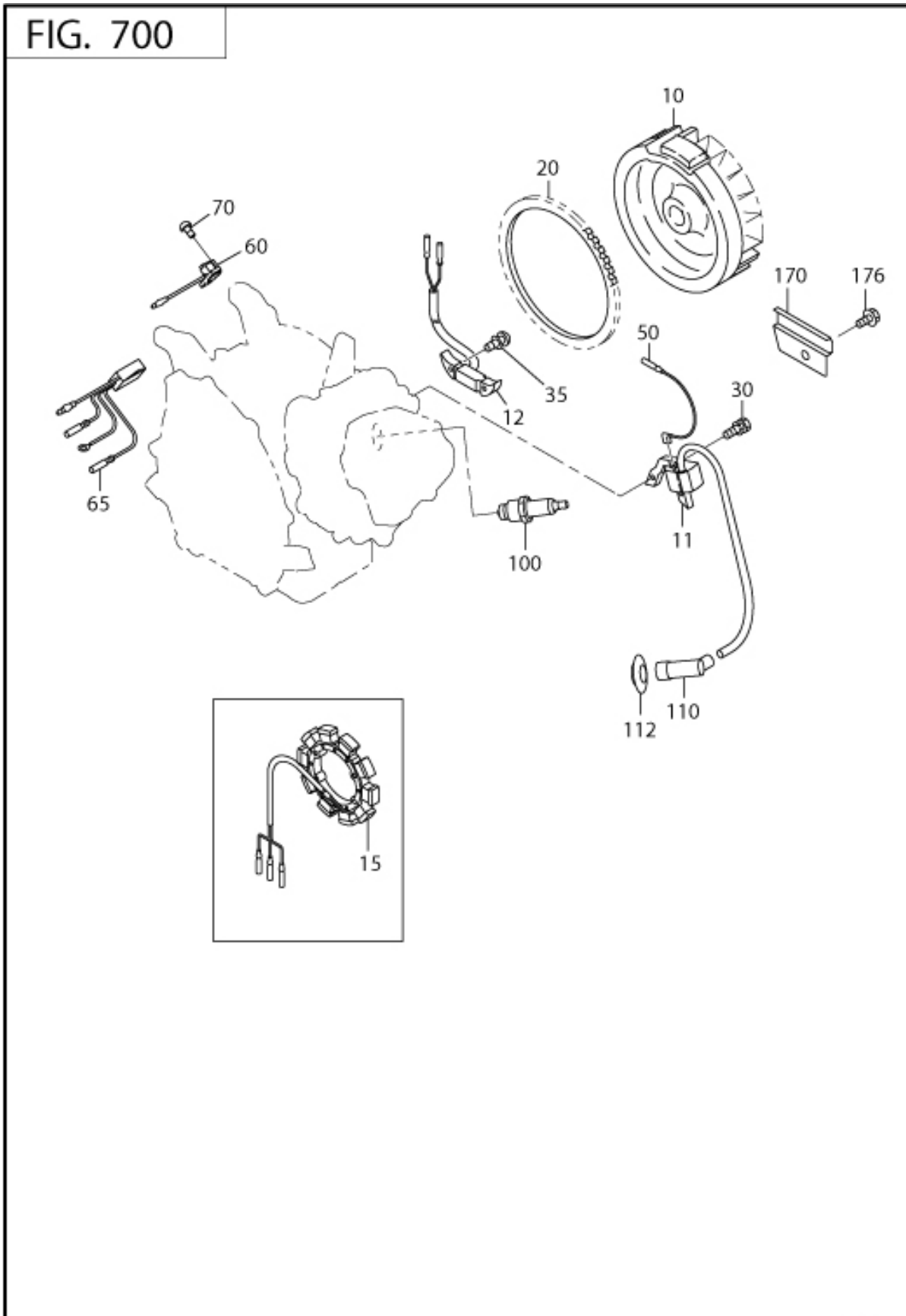
6 FUEL LUBRICANT

FIG. 640



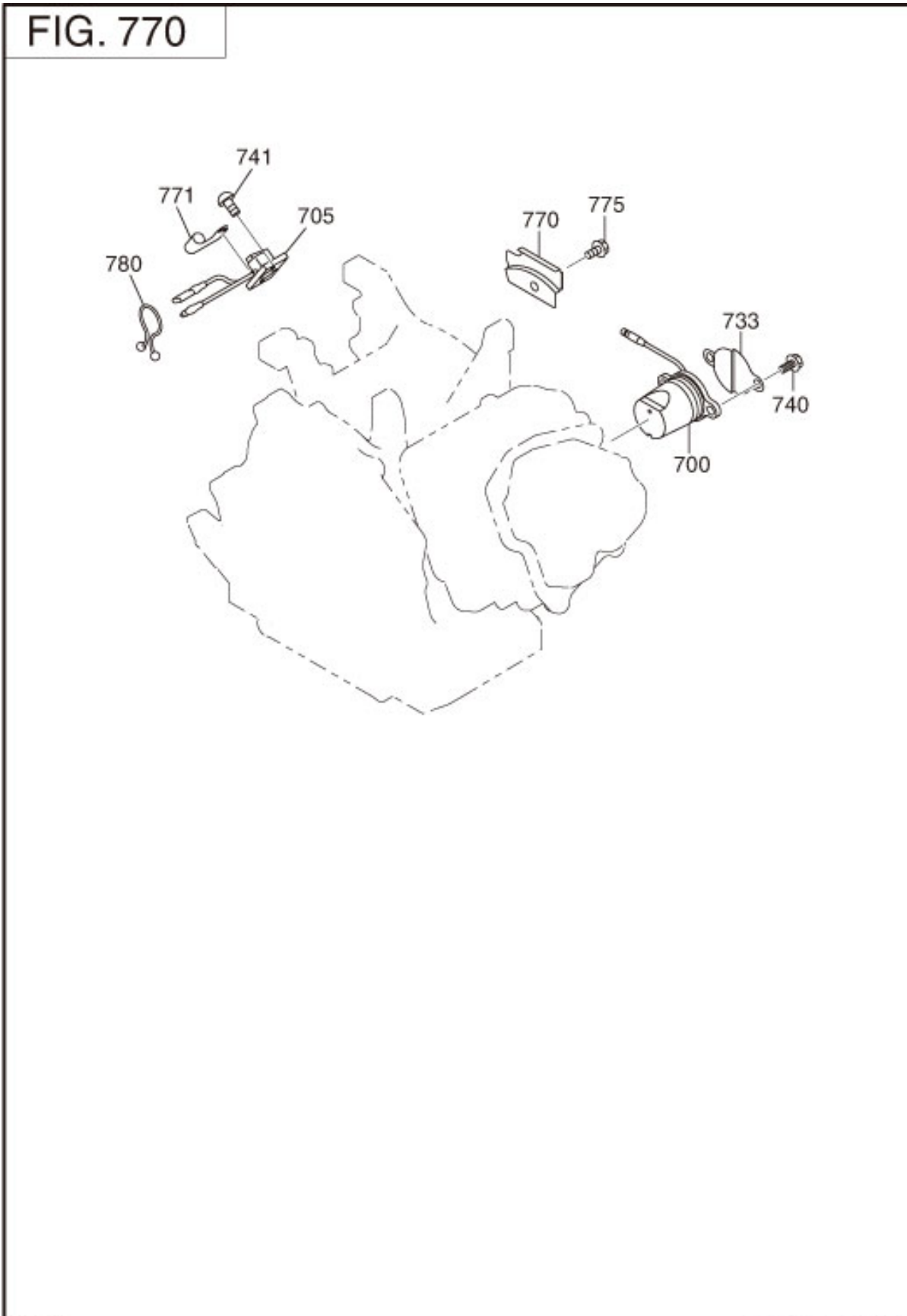
REF.	PART NUMBER	PART NAME	CODE NO.	QTY	REMARKS	INTERCHANGE
210	279-62301-40	CARBURETOR AY	-	1		279-62361-00
- 1	279-62535-08	VALVE,THROTTLE	-	1		
- 2	251-62450-08	SCREW	-	2		
- 3	279-62525-08	VALVE CHOKE	-	1		
- 5	279-62420-08	JET,SLOW	-	1	#40	
- 8	279-62520-08	SHAFT CHOKE	-	1		
- 11	279-62530-08	SHAFT SUB ASSY(TH)	-	1		
- 12	251-62453-08	SCREW	-	1		
- 14	279-62500-08	VALVE ASSY,NEEDLE	-	1		
- 15	279-62515-08	PIN,FLOAT LEVER	-	1		
- 16	285-62550-08	FLOAT CHAMBER SUB AY	-	1		
- 17	251-62350-08	GASKET	-	1		
- 18	279-62540-08	GASKET,CHAMBER	-	1		
- 19	279-62505-08	FLOAT SUB ASSY	-	1		
- 22	279-62400-08	JET,MAIN	-	1	#98	
- 28	285-62551-08	DRAIN SCREW	-	1		
- 40	279-62353-18	SCREW,ADJUSTING	-	1		
- 41	279-62445-08	SPRING	-	1		
- 79	285-62552-08	GASKET	-	1		
-102	279-62561-08	BUSH	-	1		
-103	279-62562-08	COLLAR	-	1		
-151	279-62451-08	O-RING	-	1		
-152	279-62452-08	O-RING	-	1		
-300	279-62103-10	COCK BODY-A	-	1		279-62103-20
-302	277-62110-18	PACKING	-	1		
-303	277-62100-18	CUP	-	1		
-325	006-26100-61	O-RING	-	1		
-327	279-62585-08	SCREW	-	2		

7 ELECTRIC DEVICE



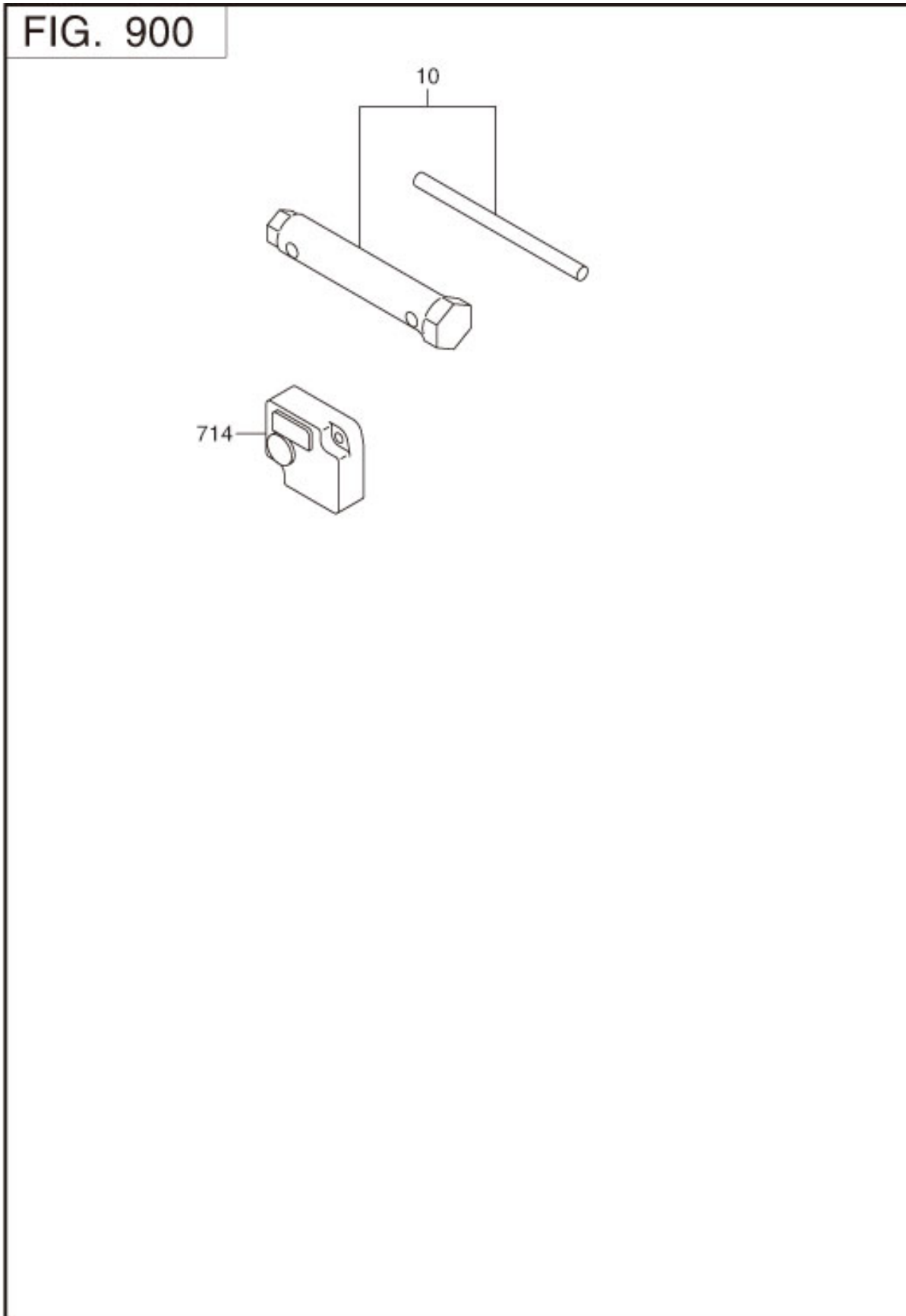
REF.	PART NUMBER	PART NAME	CODE NO.	QTY	REMARKS	INTERCHANGE
10	279-79231-01	FLYWHEEL CP	7061-	1	MARK FA AP02	279-79230-11
	279-79230-11	FLYWHEEL CP	-7060	1	MARK FA AP02	
11	279-79430-01	IGNITION COIL CP	-	1	MARK AB	
30	001-14062-50	BOLT AND WASHER AY	-	2	M6X1.0X25L W/W,SW	
50	277-73101-H1	WIRE 1 CP	-	1	L=360 BLACK	
70	015-00400-90	TAPPING SCREW	-	2	M4X12L	
100	065-01401-50	SPARK PLUG	-	1	NGK BR6HS	
110	065-50002-70	SPARK PLUG CAP	-	1		

8 ELECTRIC DEVICE



REF.	PART NUMBER	PART NAME	CODE NO.	QTY	REMARKS	INTERCHANGE
700	279-76301-41	OIL SENSOR CP	-	1		279-76301-51
705	KU3-11071-01	FLOAT C/U CP5	-	1		
740	001-14061-60	BOLT AND WASHER AY	-	2	M6X1.0X16L W/W,SW	
770	279-75501-13	WIRE CLAMP	-	1		279-75501-23
775	015-20600-50	TAPPING BOLT	-	1	M6X13DX10L	
780	056-90000-20	PURSE LOCK	-	1		

9 ACCESSORIES LABEL



REF.	PART NUMBER	PART NAME	CODE NO.	QTY	REMARKS	INTERCHANGE
10	277-90301-H0	ACCESSORY TOOL KIT	-	1		277-90301-J0